

# Student Guide in College of Medicine

3<sup>rd</sup> Edition

## Content:

- 1- About the College
- 2- Vision, Mission and Values
- 3- The Dean's Message
- 4- Organizational structure
- 5- Admission mechanism
- 6- Transfer mechanism
- 7- Conditions for transfer to the second year Medicine
- 8- Study Phases
- 9- Study system
- 10- Teaching and learning strategy
- 11- Evaluation strategy
- 12- Academic advising
- 13- Contact us

## About the college

The College of Medicine at the University of Bisha was established according to the recommendation of the Higher Education Council in its 70<sup>th</sup> meeting by Resolution No. (9/70/1433) dated 7/1/1433 AH.

On the second of the month of Jumada al-Akherah of the year 1435 AH corresponding to April the 3rd, 2014 CE, a royal decree was issued to transfer the branch of King Khalid University in the province of Bisha and its neighbouring provinces to be an independent university in the name of the University of Bisha. The college of Medicine then has enrolled its first male students batch in the academic year 1435/1436 AH. The first female student batch was enrolled in the academic year 1439/1440 AH>

## **Vision**

To be a leading college in innovative and distinguished medical education to promote community health

## **Mission:**

We are committed to graduate competent, professional and lifelong learner physician through the BISHA model:

B –Best medical education environment.

I –Intersectoral and community participation.

S –Scientific research.

H–Holistic health care approach.

A–Accountability and leadership.

## **Values:**

- Teamwork
- Continuous education
- Excellence and innovation
- Responsibility and justice
- Professionalism and leadership
- Respect for religious and community values

## Dean's Message

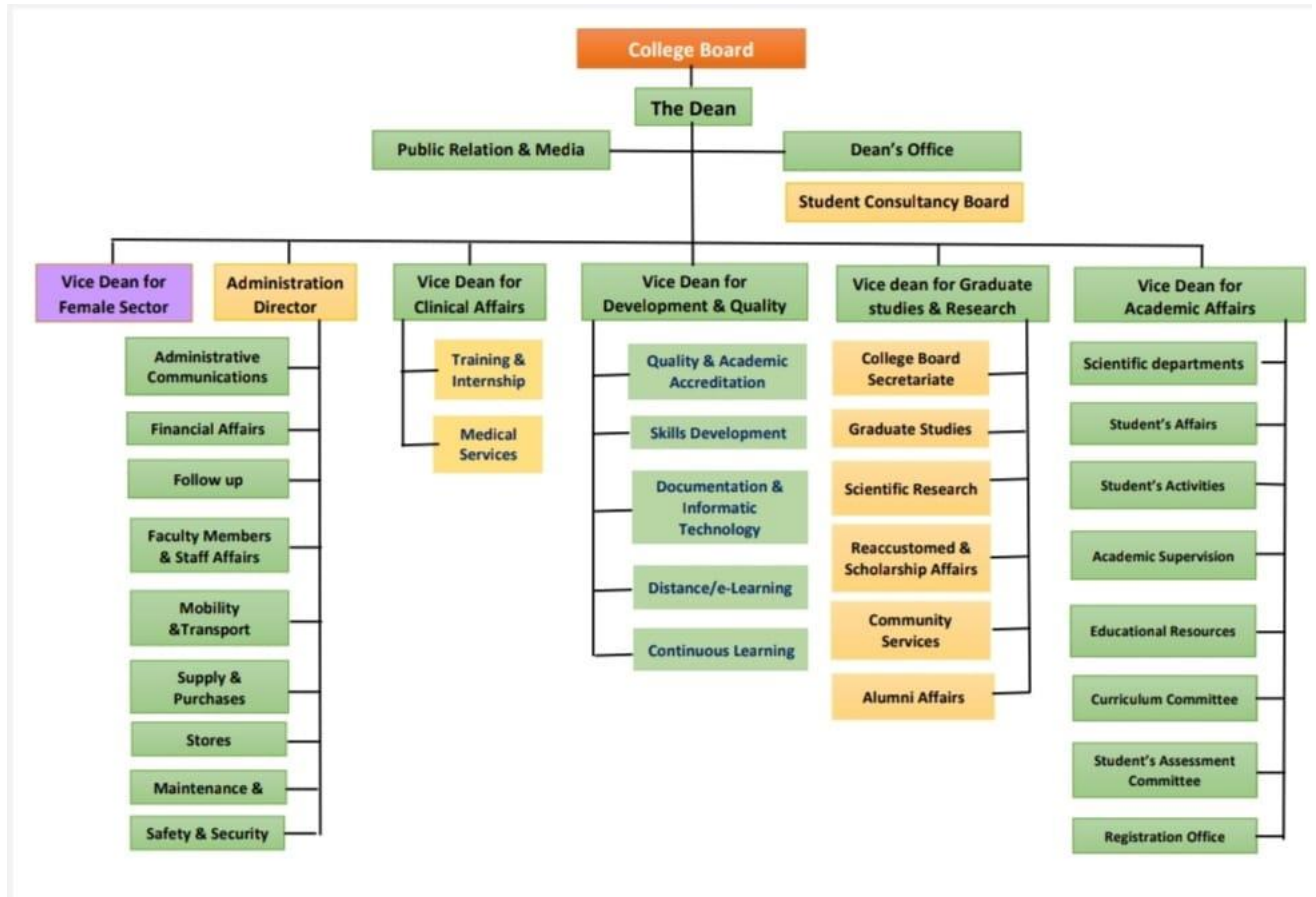
We all bear the responsibility of the medical profession in education and practice, and we are committed in the College of Medicine to achieve this by working to improve the educational process that depends centrally on the student who is its basis and purpose of existence, in accordance with the highest international academic and professional standards.

The student is an essential partner, and we will work together to prepare a competent graduate who is equipped with knowledge and skills and has the ability to employ them in building himself, developing and serving his country and society.

Dean of the College

Dr. Muhannad Alamry

# The Structural Organization of the College



### **Admission requirements for the first year (Faculty of Medicine):**

- Visit the website of the Deanship of Admission and Registration at the University of Bisha, the conditions are updated annually.

### **Conditions for transfer to the College of Medicine (internal or external transfer)**

- Visit the website of the Deanship of Admission and Registration at the University of Bisha, the conditions are updated annually.

### **Conditions for moving to the second year in the college:**

- Passing all the requirements of the first year of the health track and related to the Faculty of Medicine.
- Not to be stuck in any of the scientific courses in the health track year (biomedical sciences 1 and biomedical sciences 2 and the foundations of vital statistics)
- The student's cumulative average should not be less than 4 at the end of the first year and according to the preference and available seats.
- Achieve the minimum required level of English language skills.
- To fulfil any other conditions specified by the university and the faculty council at the time.

### **Study Phases at the College of Medicine:**

The study at the College of Medicine is six academic years in addition to an internship year It is divided into several phases:

- 1- The health track Phase.
- 2- Phase One (Basic Medical Sciences).
- 3- Phase Two (pre-clinical sciences).
- 4- Phase Three (Clinical Sciences).
- 5- Phase Four (Internship year)

## Health Track Stage (Level One, Level Two)

The first year of the Bachelor of Medicine and Surgery program at the College of Medicine aims to prepare the new students and develop the student's skills in English, learning, communication and computer skills. As well as acquiring basic science principles that qualify students to study health sciences.

### First-level courses:

Year 1 – Semester 1				السنة الأولى – الفصل الأول			
	Code	Course Title	C. H.	الساعات المعتمدة	أسم المقرر	الرمز	
SEMESTER ONE	ENG- 103	Intensive English Program - Health Science-1	6	6	برنامج اللغة الإنجليزية المكثف – للتخصصات الصحية 1	نجل 101	
	IC 1 -101	Islamic Culture 1	2	2	الثقافة الإسلامية 1	سلم 101	
	PSY -101	Learning and Thinking Skills	2	2	مهارات التعلم والتفكير	نفس 101	
	CL -101	Communication Skills	2	2	مهارات الاتصال	نهج 101	
	MDS-101	Biomedical Science 1	4	4	علوم حيوية طبية 1	طبع 101	
Total Credit Hours			16	16	مجموع الساعات المعتمدة		

### Second-level courses:

Year 1 – Level 2				السنة الأولى – المستوى الثاني			
	Code	Course Title	C. H.	الساعات المعتمدة	أسم المقرر	الرمز	
SEMESTER TWO	ENG-104	Intensive English Program - Health Science- 2	6	6	برنامج اللغة الإنجليزية المكثف – للتخصصات الصحية 2	نجل 102	
	MDS-103	Biostatistics	2	2	إحصاء حيوي	طبع 103	
	ARAB-101	Arabic Language Skills	2	2	مهارات لغوية	عرب 101	
	CS-101	Computer Skills	2	2	مهارات الحاسب الآلي	عال 101	
	MDS-102	Biomedical Sciences 2	4	4	علوم حيوية طبية 2	طبع 102	
Total Credit Hours			16	16	مجموع الساعات المعتمدة		

## Phase One:(Third level & Fourth level)

It aims to introduce students to modern medical education methods, especially those used in college program. In addition, it aims to teach basic medical sciences principles such as the principles of human anatomy, structure of the human body, interaction with variables, its growth and nutrition, and the principles of diseases, which qualifies them to study clinical medical sciences smoothly and easily.

### Third level courses :

Year 2 – Level 3					السنة الثانية – المستوى الثالث		
P H A S E O N E	SEMESTER ONE	Code	Title	CH	الساعات المعتمدة	عنوان المقرر	الرمز
		MEU-211	Introduction to Medicine & Medical Education	3	3	مقدمة في الطب والتعليم الطبي	211 تعلم
		HUB-212	Structure & Function of Human Body	4	4	تركيب ووظائف جسم الإنسان	212 جسم
		BGH -213	Biochemical & Genetic Basis of Human Body	7	7	الأسس الكيموحيوية والوراثية لجسم الإنسان	213 حيث
		NUM-214	Nutrition & Metabolism	4	4	التغذية والأيض	214 غذا
	ARAB-201	Arabic Writing	2	2	التحرير الكتابي	201 عرب	
	Total Credit Hours			20	20	مجموع الساعات المعتمدة	

### Courses of Level Four:

Year 2 – Level 4					السنة الثانية – المستوى الرابع		
P H A S E O N E	SEMESTER TWO	Code	Course Title	CH	الساعات المعتمدة	عنوان المقرر	الرمز
		MEV-221	Man and His Environment	5	5	الإنسان وبيئته	221 حاظ
		GDA-222	Growth, Development and Aging	3	3	النمو والتطور والشيخوخة	222 نمو
		PRD-223	Principles of Diseases	7	7	مبادئ الأمراض	223 مرض
		BDR-224	Behavioral Sciences and Doctoring	3	3	علم السلوك والطبابة	224 سلك
	IC 2 -102	Islamic Culture 1	2	2	الثقافة الإسلامية 2	201 سلم	
	Total Credit Hours			20	20	مجموع الساعات المعتمدة	



## Phase Two: (Levels: Five, Six, Seven, and Eight)

This is the phase of understanding and assimilating the structure, function and ailments of each organ of the body and how other devices interact and respond to pathology of the ailing system, as well as knowledge of the scientific basis for diagnosis and treatment Intensive clinical skills training is also carried out at this stage in the basic science laboratories and the clinical skills and simulation laboratory.

To transfer to the third stage, all the courses of the second stage are required to pass successfully.

### Courses of Level Five:

		Year 3- Level 5				السنة الثالثة – المستوى الخامس		
P H A S E  T W O	Code	Course Title	CH	الساعات المعتمدة	إسم المقرر	الرمز		
	HHD-311	Hematopoietic System & Host Defense	7	7	الجهاز الدموي والمناعة	311 دمي		
	CVS-312	Cardiovascular System	6	6	الجهاز القلبي الوعائي	312 قلب		
	RES-313	Respiratory System	5	5	الجهاز التنفسي	313 رئة		
	IC 3-103	Islamic Culture 3	2	2	الثقافة الإسلامية 3	103 سلم		
	Total Credit Hours			20	20	مجموع الساعات المعتمدة		

### Courses of Level Seven:

		Year 3 – Level 6				السنة الثالثة – المستوى السادس		
P H A S E  T W O	Code	Course Title	CH	الساعات المعتمدة	إسم المقرر	الرمز		
	MSK-321	Musculoskeletal System	8	8	الجهاز العضلي الهيكلي	321 عضل		
	END-322	Endocrine System	4	4	جهاز الغدد الصماء	322 غدد		
	GUS-323	Genito-Urinary System	6	6	الجهاز البولي والتناسلي	323 نسل		
	IC 4-104	Islamic Culture 4	2	2	الثقافة الإسلامية 4	104 سلم		
	Total credit Hours			20	20	مجموع الساعات المعتمدة		

## Courses of Level Eight:

P H A S E T W O	Year 4 – Level 7				السنة الرابعة – المستوى السابع			
	Code	Course Title	CH	الساعات المعتمدة	إسم المقرر	الرمز		
	GIT-411	Gastrointestinal System	6	6	الجهاز الهضمي	411 هضم		
	CNS- 412	Nervous System & Special Senses	8	8	الجهاز العصبي والحواس الخاصة	412 عصب		
	EPR-413	Basic Epidemiology & Research	4	4	مبادئ الوبائيات والبحث	413 وبا		
	BUA - 301	Entrepreneurship	2	2	ريادة الأعمال	301 دار		
	Total credit Hours			20	20	مجموع الساعات المعتمدة		

## Courses of Level Nine:

P H A S E T W O	Year 4 – Level 8				السنة الرابعة – المستوى الثامن			
	Code	Course Title	CH	الساعات المعتمدة	إسم المقرر	الرمز		
	PUH-421	Public Health	5	5	الصحة العامة	421 صحة		
	CPT-422	Clinical Pharmacology	3	3	علم الأدوية السريري	422 دوا		
	NCD-423	Non-Communicable Diseases	3	3	الامراض غير المعدية	423 غيم		
	CLS-424	Clinical Skills	5	5	المهارات السريرية	424 مهر		
	ELC-425	Elective (1)	2	2	إختياري 1	425 خير		
MDS -201	Health & Fitness	2	2	الصحة واللياقة	201 طبع			
Total Credit Hours			20	20	مجموع الساعات المعتمدة			

## Phase Three: (Level Nine, Ten, Eleven, & Twelve)

At this phase of the study, the student undergoes intensive study in clinical departments to receive the necessary skills and knowledge, in which the student learns the basics of dealing with diseases and patients, methods of diagnosis and follow-up treatment.

### Courses of Level Nine:

		Year 5 – Level 9			السنة الخامسة – المستوى التاسع		
P H A S E T H R E E	Code	Course Title	CH	الساعات المعمدة	إسم المقرر	الرمز	
	MED-511	Internal Medicine	9	9	الطب الباطني	511 بطن	
	DER-512	Dermatology	2	2	الامراض الجلدية	512 جلد	
	CAM-513	Complementary and Alternative Medicine	3	3	الطب البديل والتكميلي	513 بدل	
	MGM-514	Mass Gathering Medicine	2	2	طب الحشود	514 حشر	
	HME-515	Health Management & Economics	3	3	إدارة وإقتصاديات الصحة	515 قصد	
	201 ED 201 HIS	Elective (University) Youth and Citizenships values History of kingdom of Saudi Arabia	2	2	إختياري جامعة الشباب وقيم المواطنة تاريخ المملكة العربية السعودية	ترب 210 نرخ 201	
	Total credit Hours			20	20	مجموع الساعات المعتمدة	

### Courses of level Ten:

		Year 5 – Level 10			السنة الخامسة – المستوى العاشر		
P H A S E T H R E E	Code	Course Title	CH	الساعات المعمدة	إسم المقرر	الرمز	
	SUR-521	General Surgery	9	9	الجراحة العامة	521 جرح	
	ORL-522	Otorhinolaryngology	2	2	الانف والأذن والحنجرة	522 أذن	
	ORT-523	Orthopedics	4	4	جراحة العظام	523 عظم	
	OPT-524	Ophthalmology	2	2	طب وجراحة العيون	524 عين	
	EBM-525	Evidence Based Medicine	2	2	الطب المبني على البراهين	525 ددل	
	BUA - 212	Volunteer Work	2	2	العمل التطوعي	212 دار	
	Total credit Hours			20	20	مجموع الساعات المعتمدة	

## Courses of level Eleven:

P H A S E T H R E E	Year 6 – Level 11				السنة السادسة – المستوى الحادي عشر			
	Code	Course Title	CH	الساعات المعتمدة	إسم المقرر	الرمز		
	OBG-611	Obstetrics & Gynecology	7	7	طب النساء والولادة	نسا 611		
	FOR-612	Forensic Medicine	2	2	الطب الشرعي	612 شرع		
	PED-613	Pediatrics	7	7	طب الأطفال	613 طفل		
	PRF-614	Medical Professionalism	2	2	المهنية الطبية	614 مهن		
	-----	University Free Course	2	2	مقرر حر (جامعة)	----		
	Total credit Hours		20	20	مجموع الساعات المعتمدة			

## Courses of level Twelve:

P H A S E T H R E E	Year 6 – Level 12				السنة السادسة – المستوى الثاني عشر			
	Code	Course Title	CH	الساعات المعتمدة	إسم المقرر	الرمز		
	PSY-621	Psychiatry	3	3	الطب النفسي	621 ظنف		
	EMR-622	Emergency Medicine	4	4	طب الطوارئ	622 طرأ		
	RAD-623	Radiology & Imaging	2	2	الأشعة والتصوير الطبي	623 صور		
	FAM-624	Family Medicine	7	7	طب الأسرة	624 أسر		
	ELC-625	Elective 2	2	2	إختياري 2	625 خير		
	RPR-626	Research Project	2	2	مشروع بحثي	626 بحث		
	Total credit Hours		20	20	مجموع الساعات المعتمدة			
Overall credit Hours		229	229	المجموع الكلي للساعات المعتمدة				

## **Phase Four: (Internship year)**

The student enrolls in this phase after successfully completing the course of the program, in which he is trained in the actual practice of medicine under the direct supervision of consultant doctors with experience in various general clinical specialties for a period of 12 months. This period is considered an integral part of obtaining a bachelor's degree, and the student is not considered eligible to practice the profession until after the successful completion of this year.

## **Educational System:**

The college follows the annual intake system, whereby courses are offered once a year, and students who fail to pass specific course are allowed to take a resit examination before the beginning of the following academic year.

Courses of applied practical and clinical nature are performed as blocks which extends for subsequent weeks. Whereas some university & college requirements theoretical courses are delivered longitudinally to continue during the entire semester.

## **Evaluation strategy**

The student's assessment methods are based on the Study and Examination regulations of the University of Bisha.

The evaluation strategy of the faculty depends on 40% a continuous assessment (CA) compose of (The semester work by 15%, + mid-course examination 25%). The remaining 60% is for final examination of the course. Detailed continuous assessment components, depend on the course duration and nature but the following summarizes it's content:

<b>Course Activity</b>	
<b>PBL/CBL/Problem solving</b>	Minimum one /week
<b>TBL</b>	
<b>Seminar</b>	
<b>Logbook/Assignment</b>	
<b>Portfolio</b>	
<b>Attendance</b>	

The annual resit examination is available for students who fails in any course, provided that the sum of failure hours do not exceed 50% of the total hours of the academic year courses. It is not allowed for students who were prohibited due to absence or students who missed the final exam by being absent.

## **Mentoring & Academic Advising**

### **First: Definition of Academic Advising:**

Academic advising is defined as a process aimed at helping the student to discover his / her capabilities and potentials in order to assist him in making decisions related to his study plan, and to help him overcome the difficulties that may hinder his academic path.

### **Second: Elements of Academic Advising:**

- The student.
- Faculty members, university counselling personnel.
- Support and Guidance Unit at the University Agency for Educational Affairs
- Executive Committee for Academic and Student Advising in the College
- Permanent Committee for Academic and Student Advising

### **Third: Counseling Objectives:**

Familiarizing the student with the university bylaws and regulations

Facilitating administrative procedures provided to students in accordance with academic standards

- Work to guide students and introduce them to the credit hour system, and everything that leads to their academic excellence, and provide appropriate support to each student at the time he / she needs.
- Work to discover the talents, abilities and tendencies of students who are outstanding or not alike.

### **Fourth: Scheduling of academic advising at the Faculty of Medicine:**

The college paid special attention to academic advising students by applying the following:

- Distribution of students to academic advisors at a rate of 3 - 5 students per advisor only.

- The allocation of two hours in the weekly course schedule for each course.

Linking students' attendance and follow-up hours of academic advising with the weekly business report.

- Publishing the weekly continuous evaluation report and midterm exam scores through counselling

## **Educational and Teaching Strategies in the College of Medicine:**

1. Problem Based Learning (PBL)
2. Team Based Learning (TBL)
3. Seminar
4. Interactive Lecture & Workshops (ILW)
5. Self-directed Learning (SDL)
6. Peer Evaluation Based Learning (PEBL)
7. Community Oriented Medical Education (COME)
8. Clinical teaching in Simulation Lab (CTSL)
9. Bed Side & Clinical Teaching (BCT)
10. Journal Club
11. Practical
12. E-Learning
13. Field Visits



## Contact Us:

Twitter: @UBCOM\_BISHA

e-mail: [medicine@ub.edu.sa](mailto:medicine@ub.edu.sa)

WhatsApp: 00966176238199

Phone No.: 00966176238199

Web site: <https://www.ub.edu.sa/web/med>